



# LiteracyLinks

The Newsletter for Volunteer Tutors

Peggy L. Murphy, Editor  
February 2016

## In This Issue

Tutor Conference

## Board of Directors

Kris Magaurn, President  
Arlene Matusow, Secretary  
Susan Murray, Treasurer  
Penny Russman  
Peggy L. Murphy  
Cheryl Thoen

## Portland Literacy Council

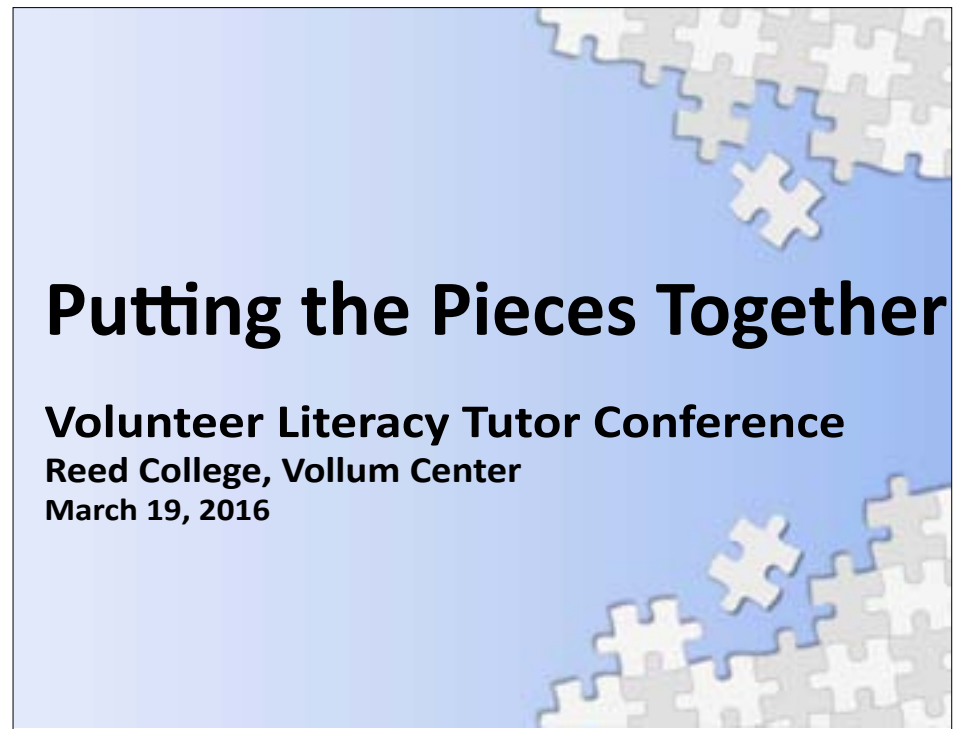
PO Box 2872  
Portland, OR 97208-2872  
[www.portlandliteracy.org](http://www.portlandliteracy.org)

## [Online Literacy Links Subscription](#)

## Newsletter Editor:

[peggy.portlandliteracy@gmail.com](mailto:peggy.portlandliteracy@gmail.com)

## Volunteer Literacy Tutor Conference



We look forward to seeing you at the annual Conference.

- **New Check-in Time:** 8:15 to 8:45 a.m.
- Workshops begin at 9 a.m. and end at 3 p.m.
- Pre-registration and Pre-payment are required.
- Reed College is located at 3203 SE Woostock Blvd, Portland, Oregon.

**More details and online registration link inside!**

## Putting the Pieces Together

The Board of Portland Literacy Council invites you to attend the annual Tutor Conference at Reed College. The format features three workshop options, morning refreshments, and buffet lunch (gluten-free option is available). Workshop presenters include adult education and ESL instructors and advocates from throughout the metro area.

### Conference Features

- Student speakers
- Network with other tutors
- Door Prizes!

Before registering, please review the workshop offerings outlined in this newsletter for content, presenter names, and short bios. Workshop levels are included in the descriptions.

Space in workshops is limited by room capacity limits. Early registration is recommended. Use the Online Registration link below; a link will also be available at [www.portlandliteracy.org](http://www.portlandliteracy.org).

### Note:

Workshops I and N, Pronunciation Techniques and Tools from a Speech Therapist, have the same content. Please select only one.

## Registration Details

Online registration is preferred. If you are unable to register online, please contact the conference registrar:

Peggy Murphy:

Email: [peggy.portlandliteracy@gmail.com](mailto:peggy.portlandliteracy@gmail.com)

Telephone: 971-207-6769

**Registration Fee:** \$42 (credit card or check)

- Some scholarships are available. Check with your coordinator before registering.
- Pay by credit card during online registration.
- Or mail a check payable to Portland Literacy Council to:

Portland Literacy Council  
C/O Susan Murray, Treasurer  
PO Box 2872  
Portland, OR 97208

**Registration/Payment Deadline:**

Saturday, March 14, 2016

**[Online Registration](#)**

## Workshop Session 1: 9:00 - 10:15 a.m.

### A. Ten Alternatives to “Good job” — Providing Meaningful Feedback to Adult Learners

In this workshop participants will learn about Growth Mindset and how it applies to adult learners, and discover how providing meaningful feedback can help boost student improvement. For all levels ESL/ ABE. **Michelle Culley** teaches all levels of ESL at Clackamas Community College and a Senior Capstone (Community based learning) at Portland State. She also manages the CCC Volunteer Literacy Center. She has an MA TESOL from Portland State University.

### B. Help! How Do I Tutor Someone with Pronunciation Issues?

This workshop will explore three key principles for pronunciation success: Student perception, focus on issues affecting intelligibility, and giving explicit corrective feedback. It will also highlight popular activities that can help students improve their pronunciation. For all ESOL levels **John Runcie** is the director of the Community ESL program at Multnomah University, and also teaches at PCC SE Campus, and is teaching a spring term Pronunciation class at Concordia University.

### C. A Different Approach to Teaching Reading, Spelling and Writing: Orton-Gillingham

This workshop will discuss the basics of the Orton-Gillingham approach and model a beginning lesson geared for adult learners (ABE all levels, and ESOL Intermediate and Higher.) Please note, the Orton-Gillingham approach is multi-sensory, but because the auditory portion of each lesson is emphasized, a student who is proficient in listening and speaking English will benefit the most. **Julie Hiefield** has taught for over 25 years and used the Orton-Gillingham approach for almost 10 years, working with children in elementary school as well as adults in the Volunteer Tutoring program at PCC. **Susan Farra** has used the Orton-Gillingham approach for 15 years, with children in elementary school as well as adults in the PCC SE campus Volunteer Tutoring program.

### D. Making Reading Fun from the Beginning

This workshop will give the tutor tools to engage beginning ESOL readers — using stories as texts for vocabulary and comprehension, plus online resources for alphabet and other skills and activities. Explore ways to help students learn to read English and have fun, too. (For Beginning ESOL students.) **Les Rivera** is an ESL professor at Clark College in Vancouver, WA and ESL Adjunct Faculty at PCC Cascade. He has been teaching ESL for more than 20 years in the Portland-Vancouver area.

### E. Vocabulary + Understanding = Reading

This workshop will give you tools and activities to help learners develop vocabulary and improve

Continued on Page 3.

reading fluency and comprehension. Materials and presentation will focus on ESOL Mid to High-Level readers. *Nanci Leiton has been teaching ESOL in the U.S. and abroad for more than 20 years. She currently teaches at PCC and is program director at Village ESOL in Beaverton.*

## Workshop Session 2: 10:30 - 11:45 a.m.

### F. Using Authentic Materials

In this interactive workshop, participants will explore the use of authentic materials as a tutoring tool. Participants will discuss different sources for authentic materials, and how to use them with learners of any level. Participants will also practice modifying materials to teach various language functions. For all levels ABE/ESOL. *Michelle Culley teaches all levels of ESL at Clackamas Community College and a Senior Capstone (Community based learning) at Portland State. She also manages the CCC Volunteer Literacy Center. She has a MA TESOL from Portland State University.*

### G. “To Be . . .” and Other Grammar Issues

Learn how to teach basic grammar, with a focus on common verbs. We will present activities for practice and for incorporating grammar knowledge into everyday usage, especially listening and speaking. We will also include some correction techniques. For ESOL students at the Low and Intermediate Levels. *Sara Packer and Delpha Thomas are ESOL instructors at PCC SE who love figuring out the intricacies and oddities of English grammar.*

### H. Tap into FREE Resources at LearningExpress

In this hands-on introduction to LearningExpress, an on-line library free via libraries throughout Oregon (including community colleges), tutors will explore the wealth of resources available to their students. Participants need to bring a county library card. We will also explore other free Internet resources, giving tutors materials and ideas they can use with their students. For ABE/ESOL/GED mid-high level readers. *Gale Czernski is an adjunct reading and writing instructor in the ABE program at Portland Community College’s SE Campus. Juliet Pursell is a full-time reading and writing instructor in the ABE program at PCC’s SE Campus.*

### I. Pronunciation Techniques and Tools from a Speech Therapist

Learn techniques and tools for targeting specific pronunciation issues. Topics will include identifying the sounds of a student’s home language, and understanding how stress, rhythm and intonation affect speech intelligibility. *Cece Dispenza is a Speech-Language Pathologist at Providence ElderPlace in Portland, and also teaches an ESOL Pronunciation Class at St. Anthony’s.*

### J. Culture Exchange

Students from around the world share some of their cultural heritage and practices. Join them for a discussion of the wondrous variety of ways that people express themselves

in culture and language. A workshop for students and tutors, facilitated by **Jennifer Hall**, a long-time ESOL instructor and ESOL Specialist at PCC. She received her M.A.TESOL from the School for International Training in Brattleboro, Vermont.

## Workshop Session 3: 1:45 - 3:00 p.m.

### K. When Grammar is a Verb: 5 Dynamic Ways to Develop Fluency

Learn five electrifying techniques for developing grammar and fluency at the same time. This workshop is suitable for tutors who work with ESOL All Levels — especially for those who work with multilevel groups. *People-Places-Things provides Intercultural Communication Skills throughout the greater Portland area, and the world. Sheila Gibbons, Ramin Tokhi, and Zadok Taylor, three P-P-T partners, will present the workshop.*

### L. Fun Ways to Learn English Through TPR (Total Physical Response)

Help your ESOL students learn basic vocabulary and grammar in fun and active ways. The TPR (Total Physical Response) method will get the students moving and interacting – and keep the learning interesting while they build their listening and speaking skills and increase their vocabulary. For all ESOL levels. *Bernie Bernardo is a native of the Philippines and himself an ESL learner/speaker. He earned his MA TESOL at Multnomah University and is currently an Intensive English instructor at PCC International English Program and teaches with McDonald’s Under the Arches English Program in Salem, Oregon.*

### M. 10 Easy Ways to Use Media in Tutoring Sessions

Incorporate technology into your tutoring sessions! Learn about free and accessible websites and apps in this hands-on workshop. For all levels of ABE and ESOL. *Blair Orfall works with volunteer tutors at an adult ESOL volunteer tutoring program at SE Works and coordinates Lewis & Clark’s Foreign Language and Literatures Interactive Learning Center. She is also passionate about teaching strategies for emerging adult readers.*

### N. Pronunciation Techniques and Tools from a Speech Therapist (Repeat of Session I)

Learn techniques and tools for targeting specific pronunciation issues. Topics will include identifying the sounds of a student’s home language, and understanding how stress, rhythm and intonation affect speech intelligibility. *Cece Dispenza is a Speech-Language Pathologist at Providence ElderPlace in Portland, and also teaches an ESOL Pronunciation Class at St. Anthony’s.*

### O. Tutor Discussion

Join experienced tutors to talk about the joys and frustrations of tutoring. Bring your questions and ideas to share with others. Moderated by **Kathleen Holloway**, coordinator of the VLT Program at PCC SE Campus. She has taught ESOL for more than 25 years and has worked as a trainer in Washington and Oregon. She holds an M.A. in Teaching ESL from The School for International Training, Brattleboro, VT.

Portland Literacy Council  
PO Box 2872  
Portland, OR 97208

-----  
**Register Online at [www.portlandliteracy.org](http://www.portlandliteracy.org).**

We recommend online registration. If you don't have Internet access, you may register and pay by mail. A confirmation receipt will be sent or Emailed to you.

Email address \_\_\_\_\_ Student  Tutor

Name \_\_\_\_\_ Phone \_\_\_\_\_

Address \_\_\_\_\_ City \_\_\_\_\_ State \_\_\_\_\_ Zip \_\_\_\_\_

What is your tutoring or program affiliation? \_\_\_\_\_

**Please circle the letters of the workshops you plan to attend (one per session). Thanks**

**Session 1:** 9:00-10:15    A B C D E

**Session 2:** 10:30-11:45    F G H I J

**Session 3:** 1:45-3:00    K L M N O

**Lunch:**    Regular     Gluten-free